

PIERCE[®]

PULLING FOR YOU

DUMP KIT GUIDE

CONVERSION KITS FOR OEM STOCK BEDS OR FLAT BEDS

Dylan Galyean
Account Manager

"The PIERCE Dump Kit was very strongly made and well-constructed. I was very pleased with it. I thought PIERCE was pleasant and professional to deal with."

– Mike Foster, Luray, Virginia

1

Why PIERCE Dump Kits?

2

Which Dump Kit Fits My Truck?

3

How Do I Install The PIERCE Dump Kit?

4

FAQ: Get Your Questions Answered.

1 WHY PIERCE DUMP KITS?

If you are willing to go the extra mile with installation, dump kit conversion is the best choice. Dump kits are the only option that matches the highest lifting capacities for the lowest cost while keeping your payload capability, maneuverability and the overall original look of your truck intact.

Assuming you will put the effort in to make your truck the workhorse that finishes the job without a trailer or a bed insert, let's consider the benefits unique to PIERCE for your dump kit conversion.



Family Owned | For 40 years our employees and our customers stay with us because they know they are valued. We believe our customers are our friends and our team is family. The PIERCE teams lives by our core values (CHASE) - consistency, honesty, action, selflessness and excellence.



Made in the USA | In the small town of Henrietta Texas, the PIERCE production team proudly makes your dump kit in the standards of the National Truck Equipment Association (NTEA).



2-Year Warranty | We are confident that our USA-made dump kit is the best quality. We offer a 2 year warranty.



Free Shipping | These are not the lightest and cheapest products to ship, but with our free shipping the PIERCE dump kit's ease of purchase is unbeatable.



Customer Service and Technical Support | Our customer service never expires. Call us during business hours or email us and we will help you install, fix, maintain, or send it back under warranty. Our website also has multiple tools and articles that can help maintain your product after purchase.

2 WHICH DUMP BED KIT FITS MY TRUCK?

Here are two considerations that will help you decide the best kit for your truck:

What type of bed are you lifting?



Fits
106+ different
Chevy/GMC,
Dodges
and Fords

OPTION A |
Dump Kit for
OEM Stock Beds



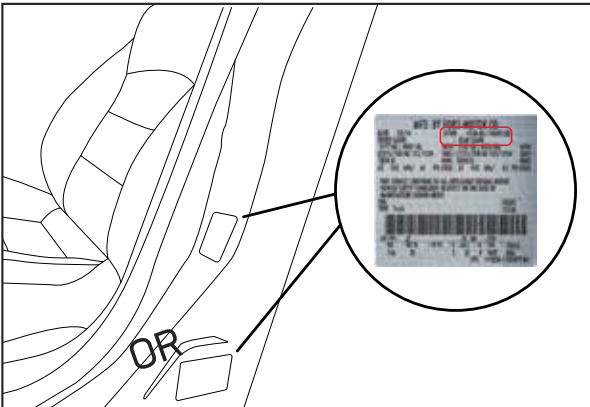
Fits
most flat bed
designs on the
market.

OPTION B |
Dump Kit for
Flat Beds

What is your truck's weight limit?

How to find your truck's GVWR or weight limit.

Find your truck's Gross Vehicle Weight Rating (GVWR) to know how much load you can haul safely. The GVWR is usually found on a label inside the vehicle's door frame.



This rating is the max weight your truck can handle, including original weight, fuel, cargo, passengers and anything added such as a dump bed kit. The weight rating should never be exceeded because it is hazardous to the brakes, axle, tires, suspension, and the overall safety of the passengers.

OPTION A | Dump Kit for OEM Stock Beds

PIERCE dump bed kit for OEM stock beds fit 106+ different Chevy/GMC, Dodges and Fords. With 4,000 lbs of possible lifting strength, the PIERCE dump hoist kit can make your work truck more effective at home or on the job. The kit is designed to allow the truck bed to remain the same height and go undetected when installed properly.



SPECIFICATIONS

LOAD CAPACITY	Up to 4,000 lbs.
WEIGHT	200-300 lbs.
MAXIMUM ANGLE	45 degrees
DUMPING TIME	10 seconds
PUMP PRESSURE	2,250 psi
BREAKER	200 amp / 42V DC
REPLACEMENT PUMP	PM319 PM-3551
REPLACEMENT CYLINDER	P046C
CYLINDER BORE	3.5"
CYLINDER STROKE	8.875"
CYLINDER DIAMETER SHAFT	1.25"
CYLINDER WORKING PRESSURE	2,250 psi
INSTALLATION	OEM Truck Bed

FIT CHART

MAKE	YEAR	TYPE	PART NO.
Ford	1998 and older	6' and 8' Bed	DK2UK
Ford	1999-2016	Superduty 6' or 8' Bed	DK2UFK
Ford	1997+	F150 new body	Not available
Dodge	1983 and older	6' and 8' Bed	DK2UK
Dodge	1984-1993	6' and 8' Bed	DK2UDK ¹
Dodge	1984-1993	6' and 8' Bed	DK2UDK17 ²
Dodge	1994-2002	6' Bed 8' Bed Standard Cab 8' Bed Extended Cab	DK2UDNK
Dodge	2003 and newer		Not available ³
Chevy/GMC	1987 and older	6' and 8' Bed	DK2UK
Chevy/GMC	1988-1998	8' Bed	DK2UCK ^{4,5}
Chevy/GMC	1988-1998	6' Bed	DK2UCSBK ⁴
Chevy/GMC	1999-2017	8' Bed	DK2UCLB99K ^{5,6,7}
Chevy/GMC	1999-2017	6' Bed	DK2UCSB99K ^{5,7}

PIERCE®

PULLING FOR YOU

PIERCE STOCK BED DUMP KIT

FIT CHART NOTES:

- Distance between bed crossmembers measures 16-3/8"
- Distance between bed crossmembers measures 17"
- Kit not available unless you have a channel crossmember
- True '88-'98 trucks have a main frame crossmember that opens up. Some GM '88-'90 models require the DK2UK due to their downward facing crossmember.
- True '99 trucks have a 3" round crossmember. Some GM '99-'01 models require the DK2UCK (long beds) or DK2UCSBK (short beds) due to their upward facing crossmember.
- All DK2UCLB99K kits require bed reinforcements. reinforcements included with kits.
- 1999 - 2017 Chevy trucks may require a fuel filler extension. Or you can shorten your filler, mount directly on the tank, and raise bed a short distance when fueling.

**PIERCE Stock Bed Kits are not for use on flat beds.
For flat beds use Light Duty and Medium Duty Kits.**

OPTION B | Dump Kit for Flat Beds

The PIERCE dump kit for flat beds is a complete kit designed primarily for installation on 1/2 - 1-ton trucks with an aftermarket, dump bed or flatbed bodys. Fits flatbed lengths up to 12'. They also work well on utility trailers and other applications where space limitations are not a factor.



SPECIFICATIONS	DKLK	DKMK
LOAD CAPACITY*	Up to 10,000 lbs.	Up to 15,000 lbs.
WEIGHT	395 lbs.	480lbs.
MAXIMUM ANGLE	45 degrees	45 degrees
DUMPING TIME	10 seconds	10 seconds
PUMP PRESSURE	2,250 psi	2,250 psi
BREAKER	200 amp / 42V DC	200 amp / 42V DC
REPLACEMENT PUMP	PM3196P PM-3551	PM3196P PM-3551
REPLACEMENT CYLINDER	P05314BW	P046514W
CYLINDER BORE	4"	5"
CYLINDER STROKE	14"	14"
CYLINDER DIAMETER SHAFT	2"	2"
CYLINDER WORKING PRESSURE	2,250 psi	2,250 psi
INSTALLATION	Flatbed	Flatbed

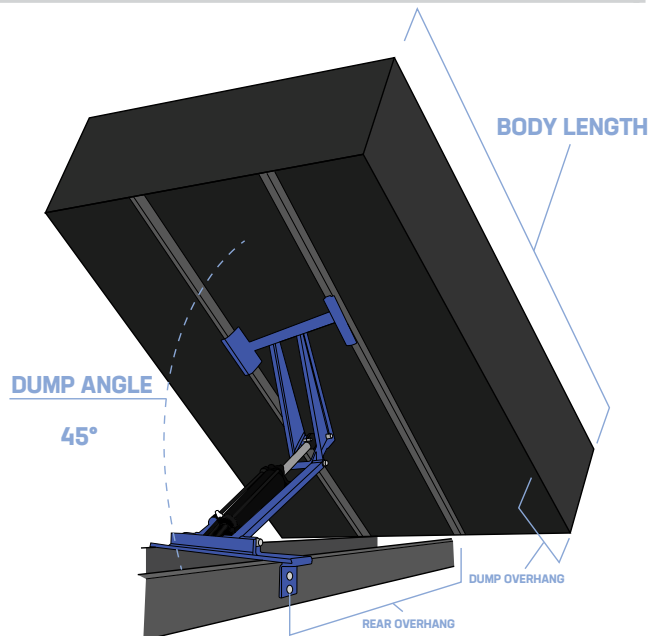
*Maximize The Lift Capacity For Your Kit

The bed length and dump overhang length effect the lift capacity of your kit. For example, if you require the maximum capacity for a DKMK kit you must have:

- 8' bed with 12" dump overhang
- 10' bed with 24" dump overhang
- 12' bed with 36" dump overhang

To reach maximum lift capacity for your kit, a few questions must be asked:

1. What is the bed length?
2. How much dump overhang past the frame can I have?
3. What is the optimal dump angle for my application?



DKLK | OVERHANG AND BED LENGTH

	8' Bed	10' Bed	12' Bed
0"	4.75T	3.75T	3T
12"	5T	4.75T	3T
24"	-	5T	4.75T
36"	-	-	5T

DKMK | OVERHANG AND BED LENGTH

	8' Bed	10' Bed	12' Bed
0"	7T	6.5T	6T
12"	7.5T	7T	6.5T
24"	-	7.5T	7T
36"	-	-	7.5T

3 HOW DO I INSTALL THE PIERCE DUMP BED KIT?

Here is an overview of the installation process including equipment and tools you will need, as well as, the step-by-step process to install the dump bed kit. The PIERCE customer service team is full of experts ready to walk through any difficulties in real time. Just call us at 940-538-5643.

Tools for Installation

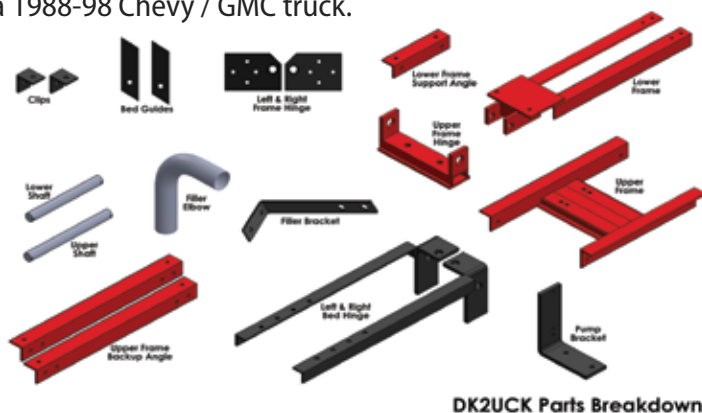
- Chain Hoist or Props
- 3/8" and 1/2" Portable Electric Drill and Bits
- Impact Wrench
- Hoist or Cherry Picker
- Metal Cutting Saw
- Drop Light
- Extension Cord
- Hammer
- Sockets
- Screwdrivers
- Wrenches
- Grinder
- Welder
- Cutting torch
- C-Clamps
- Vise-grips
- Tape Measure
- Grommets
- Zip Ties
- One Hole Straps
- 6 quarts of Dextron 3 or Hydraulic Fluid
- Red and Black Electrical Tape
- Cardboard
- Safety Glasses
- First Aid Kit
- Gloves
- Teflon Tape

What's Included in a PIERCE Dump Kit?

Once you have made your purchase, it will be shipped on pallet with steel, hardware, hydraulics and electrical parts. Below is a list of parts that come with the DK2UCK. This kit fits a 1988-98 Chevy / GMC truck.

INCLUDED DUMP KIT PARTS

- Frame Hinge
- Bed Hinge
- Clips
- Lower Frame Leg Fastener
- Upper Frame Hinge
- Lower Shaft
- Upper Shaft
- Bed Guides
- Pump Bracket
- Filler Bracket
- Fuel Filler Pipe
- Scissor Assembly
- Upper Frame
- Lower Frame
- Upper Frame Angle
- Hydraulic Power Pump



INCLUDED ELECTRICAL AND HARDWARE

20ft	Black Wire, 4 gauge	2	Flat Washer, 5/8"	2	Hex Screw, 1/2"-13 x 2.5"
20ft	Red Wire, 4 gauge	2	Lock Nut, 5/8"-11, G8	2	Hex Screw, 1/2"-13 x 1.5"
20ft	Ribbon Wire, 18/3"	22	Hex Screw, 3/8"-16 x 1", G8	4	Lock Nut, 1/2"-13
1	3 Position Toggle Switch	2	Hex Screw, 3/8"-16 x 1.25", G8	1	Scissor Support Cable 15'
1	Butt Connector	32	Lock Nut, 3/8"-16, G8		
1	Ring Terminal, 5/16"	8	Tap Bolt, 3/8" 16 x 3"		
2	Ring Terminal, #10	4	Flat Washer, 3/8"		
3	Female Push-On Terminal, 1/4"	4	Cotter Pin, 1/8" x 2"		
6	Battery Eye, 5/16"	2	Cable Clamp, 1/8"		
1	200 Amp Breaker	2	Rubber Bumper, 2" x 2"		
1	Fitting	1	Hose Clamp, 3"		
2	Hex Screw, 5/8"-11 x 2 1/2", G8	2	Hose Clamp, 2"		

INCLUDED HYDRAULIC COMPONENTS

- 1 Hydraulic Hose, 5'
- 1 Fitting 90°, 1/4"

Who will install the Dump Kit?

Now that you have decided on the right PIERCE dump kit it will need to be installed. The installation can be done by yourself or a trusted installer in your area. Here is an overview to help you decide who will undertake the installation:

SELF INSTALLED

If you choose to do the installation yourself, the following are expertise required to complete the job.

Mechanical - You will have to follow our manual's directions and use mechanical skills in the event the directions do not cover specific considerations. For example, some bed years have components like the fuel filler that may need to be moved so that the bed can close and not flatten the filler.

Electrical - Power and ground connections will be routed directly to the battery

Hydraulics - The hydraulic pump will be installed, fluid added to the reservoir and wired.

Welding - Some cutting of the rear frame hinges may be required during installation. We recommend following all safety procedures that are listed in the manual; viewing all dump kit related videos; having an extra pair of hands when lifting the bed and steel parts. Call us with any questions before or during installation. We are happy to help.

INSTALLATION SHOP CRITERIA

If you choose not to do the hydraulic dump kit installation yourself, we have found body shops and machine/welder shops typically have the expertise required. Basically, any shop installing flat beds has the expertise.

The key to finding a reputable shop is research. While the following criteria does not guarantee a positive experience, it can help identify shops with experience and a history of good work.

There are many resources for best practices when choosing the right body shop you can check out our favorites here: Angie's list, "Advice on finding a reputable body auto body shop" and The ASE, "How to choose the right body shop".

1. Research | *Who is available in your area?*

- Google is your best bet when looking for a local welder or fabricator with experience. Search keywords along with your location to find one near you.
- Also, look up their standing with the Better Business Bureau and if they have any complaints filed.

2. Reputation | *Word-Of-Mouth*

- Speak to colleagues and friends for recommendations.
- Read the Google or Yelp reviews.

3. Certifications | *Is the shop is certified by one or more of the following?*

- The National Institute for Automotive Service Excellence or ASE
- The Automotive Service Association or ASA
- Many states and large metropolitan areas have their own associations or technical colleges.

4. Insurance | *Does the shop carry the following insurance?*

- Garage Liability Insurance
- Garage Keepers Insurance

Whether you choose to install the dump kit yourself or hire someone else, PIERCE offers complete instructions and numerous videos to assist during the process.

4 GET YOUR QUESTIONS ANSWERED: FAQ'S

Finding Answers Fast



We strive to offer thorough information about our products. From comparison guides to video overviews to illustrative wiring diagrams. Go to www.piercearrowinc.com to view more.

With 1.6M views on our YouTube channel, visit our channel for installation overviews and testimonials. It's the best place to get quick answers.

Frequently Asked Questions

Q. Can I pull a trailer with the PIERCE dump kit?

- A gooseneck trailer SHOULD NOT be pulled with a truck that has a converted dump bed. A frame mounted receiver hitch is acceptable.

Q. Will I have to raise my bed?

- With dump kits for OEM stock beds, raising your bed is unnecessary.
- With dump kits for flat beds, you will be required to raise your bed up to 6.5 inches depending on the truck.

Q. Do I need to have overhang?

- For a factory bed dump kit, the overhang is not necessary.
- For a flatbed conversion, you do not have to have overhang, but mounting the rear hinges is much easier when you have at least 6 inches of overhang. Also, REMEMBER less overhang equals less capacity. View the overhang table on page 4 for optimum capacity.

Q. How much welding or cutting is involved?

- With the dump kit for OEM stock beds, minimal welding is required. The hinges are welded and the rest of the installation process is bolted on.
- The OEM kit is entirely bolt on with welding being optional.

Q. Why isn't there an OEM stock dump kit to fit my truck?

- Newer truck beds 2018+ are manufactured differently than 2017 models. The main issue is the way the truck bed fits around the chassis. This rounded design causes the bed to not be able to be lifted unless the bed is several inches away from the bed. We are currently developing more kits for newer models.

