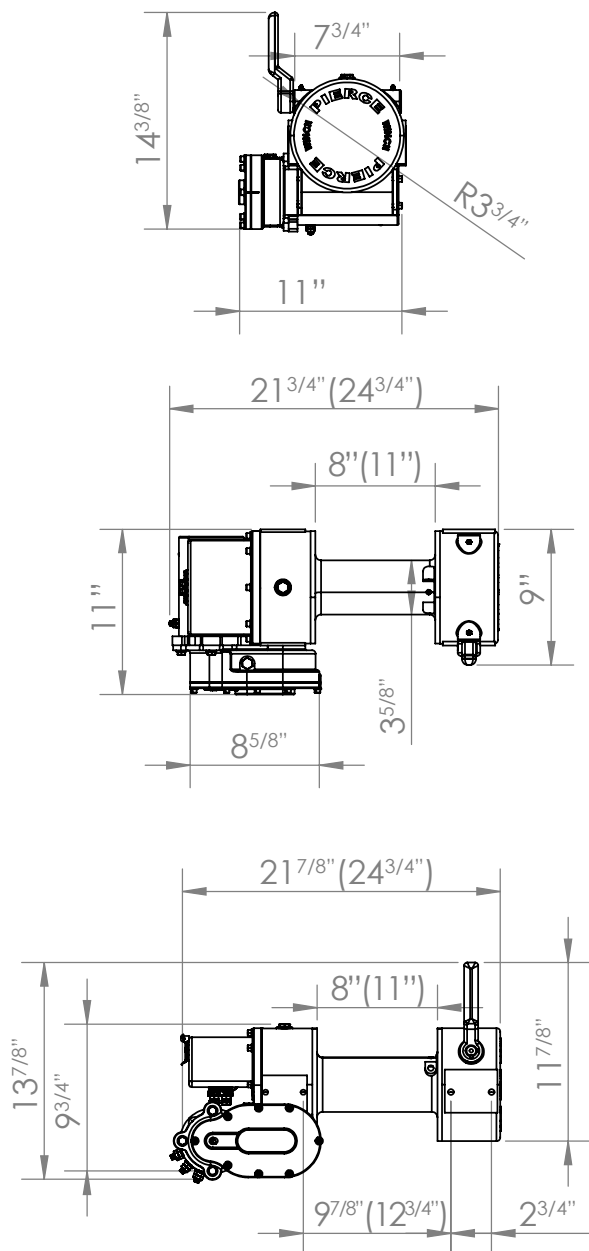
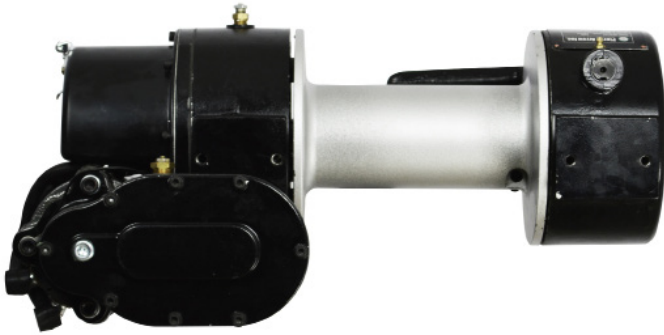


PSW654-8MK & PSW654-11MK WINCH

PIERCE

PULLING FOR YOU



CATEGORY WINCH

PART NO. PSW654-8MK
PSW654-11MK

PRODUCT DESCRIPTION

12,500 lb Worm Gear Electric DC Winch / 8"(11") drum

SPECIFICATIONS

**values in (#) represent the values for the 11MK*

RATED LINE PULL	12,500 lb
LINE SPEED	9 fpm
VOLTAGE	12V
RATIO	728.5:1
AMPERE	60/400 amps
MINIMUM WIRE GAUGE	4 gauge
RECOMMENDED BATTERY	650 CCA
MOTOR	1.5 hp
WINCH CONSTRUCTION	Cast Metal
GEAR TRAIN	Worm Gear
CLUTCH	Dog
BRAKE	Worm Gear
ROTATION OF WINCH	CCW
DRUM SIZE	3.5" x 8" (11")
WIRE ROPE RECOMMENDED	3/8" x 100' (125')
WINCH WEIGHT	88 lb (92 lb.)
GROSS WEIGHT	95 lb (96 lb.)
WINCH DIMENSIONS (LxWxH)	16.25" (19.25") x 8" x 13.5"
BOX DIMENSIONS (LxWxH)	14" x 14" x 24" (27")

LINE SPEEDS

LAYERS OF WIRE ROPE	PULL	DRUM CAPACITY	SPEED (@ 16 GPM)
1	9,000 lb	25 ft (20 ft)	12.6 fpm
2	7,500 lb	50 ft (40 ft)	15.1 fpm
3	6,400 lb	75 ft (60 ft)	17.5 fpm
4	5,600 lb	100 ft (80 ft)	20.0 fpm