

PSW654-8K & PSW654-11K WINCH

PIERCE

PULLING FOR YOU



CATEGORY	WINCH
-----------------	-------

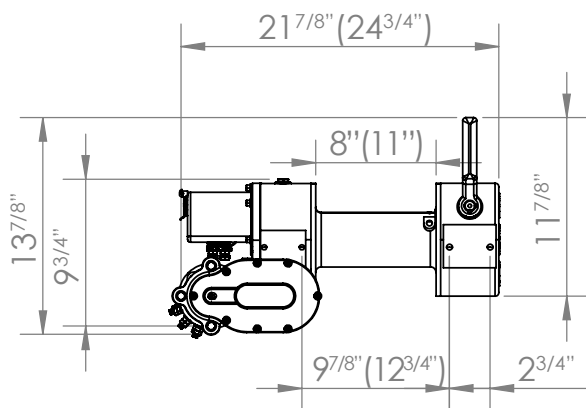
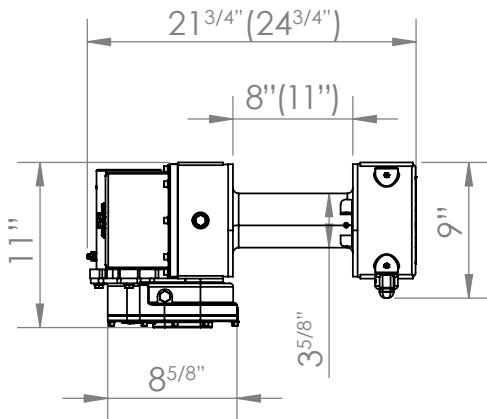
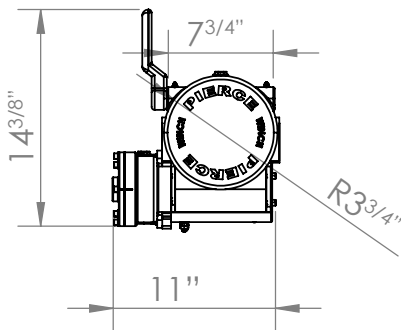
PART NO.	PSW654-8K PSW654-11K
-----------------	-------------------------

PRODUCT DESCRIPTION	9,000 lb Worm Gear Electric DC Winch / 8"(11") drum
----------------------------	---

SPECIFICATIONS

*values in (#) represent the values for the 11K

RATED LINE PULL	9,000 lb
LINE SPEED	14 fpm
VOLTAGE	12V
RATIO	470:1
AMPERE	60/400 amps
MINIMUM WIRE GAUGE	4 gauge
RECOMMENDED BATTERY	650 CCA
MOTOR	1.5 hp
WINCH CONSTRUCTION	Cast Metal
GEAR TRAIN	Worm Gear
CLUTCH	Dog
BRAKE	Worm Gear
ROTATION OF WINCH	CCW
DRUM SIZE	3.5" x 8" (11")
WIRE ROPE RECOMMENDED	3/8" x 100' (125')
WINCH WEIGHT	88 lb (92 lb)
GROSS WEIGHT	92 lb (93 lb)
WINCH DIMENSIONS (LxWxH)	16.25" (19.25") x 8" x 13.5"
BOX DIMENSIONS (LxWxH)	14" x 14" x 24" (27")



LINE SPEEDS

LAYERS OF WIRE ROPE	PULL	DRUM CAPACITY	SPEED (@ 16 GPM)
1	9,000 lb	25 (20) ft	12.6 fpm
2	7,500 lb	50 (40) ft	15.1 fpm
3	6,400 lb	75 (60) ft	17.5 fpm
4	5,600 lb	100 (80) ft	20.0 fpm