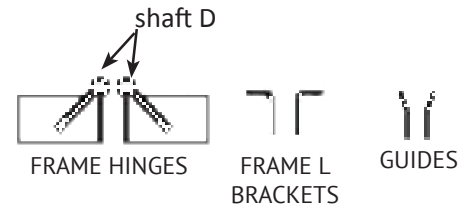
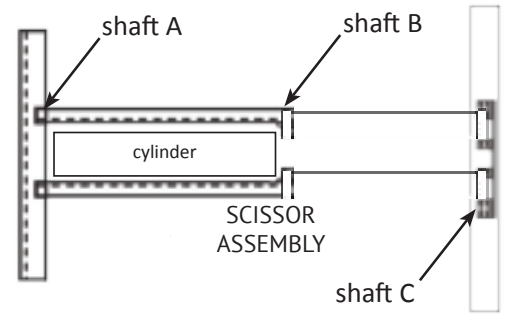
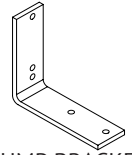


DUMP KIT CONTENTS

	DKLK	DKMK	DKHK	PART	QTY
SCISSOR ASSEMBLY (PRE-ASSEMBLED)	B231	A496	A481	Scissor Top	1
	A218	A5003	A480-2	Scissor Lower Arm Driver and Passenger Side	2
	B230	B478	B478X	Crossmember	1
	A2283	A4734	A4732	Shaft A [DKLK - 7.5"][DKMK - 9.25"][DKHK - 22.25"]	1
	A2285	A4731	A4131	Shaft B [DKLK - 13.5"][DKMK - 15"][DKHK - 14"]	1
	A2282	A4735	-	Shaft C [DKLK - 19.5"] [DKMK - 21.5"]	1
	P05314	P046514	P016516	Hydraulic Cylinder	1
	SPRP221	SPRP221	-	7/32" x 2" Roll Pin	6
-	-	PSRP1/4X2	1/4" x 2" Roll Pin	4	
CHASSIS FRAME PARTS	A4952	A5012	A4N2	Driver Side Frame Hinge	1
	A4953	A5013	A4743	Passenger Side Frame Hinge	1
	A492	A492	A464	Frame L Bracket	2
	A494	A494	A463	Guides	2
	A2286	A4734	A4736	Shaft D [DKLK - 9.5"][DKMK - 9.25"][DKHK - 13.75"]	2
SILL PARTS	B2292	B5022	B491-2	Driver Side Sill Hinge	1
	B2293	B5023	B491-3	Passenger Side Sill Hinge	1
	A219	A219	A488	Sill Supports	2
HARDWARE	0115107	0115107	0115107	3/8" - 16 x 1.25" G5 Hex Head Bolts	2
	0144580	0144580	0144580	1/2" - 16 x 3" G8 Hex Head Bolts	8
	1133861	1133861	1133861	1/2" Flatwasher	8
	1137187	1137187	1137187	1/2" - 13 Locknut	10
	PS544	PS544	PS544	3/8" Lockwasher	2
	SPRP221	SPRP221	-	7/32" x 2" Roll Pin	4
	-	-	64257	1/4" x 2.5" Roll Pin	4
	15209	15209	15209	1/2" - 13 x 1.5" G8 Hex Head Bolt	2
	PS545	PS545	PS545	3/8" x 1" G8 Hex Head Bolt	2
	1137185	1137185	1137185	3/8" Locknut	2
	1133815	1133815	1133815	3/8" Flatwasher	2
	0115363	0115363	0115363	3/4" - 10 x 2.5" G8 Hex Head Bolts	1
	1137190	1137190	1137190	3/4" G8 Locknut	1
	1133820	1133820	1133820	3/4" Flatwasher	2
	P046SP	P046SP	P046SP	Safety Prop Kit	1
P030NT	P030NT	P030NT	3/4" Twist Lock Plunger Pins with Threads	1	
9629	9629	9629	8" Zip Tie Black UV	12	
ELECTRICAL PARTS	76631	76631	76631	200 amp Breaker	1
	PS501	PS501	PS501	#4 Welding Cable - Black	20'
	PS501R	PS501R	PS501R	#4 Welding Cable - Red	20'
	PS006	PS006	PS006	5/16" Battery Eye	6
CP271MTE*	CP271MTE*	CP271MTE*	2 Button Remote without Plug	1	
HYDRAULIC PARTS	P19414	P19414	P19414	3/4" x 1/4" 90° Swivel O-Ring Fitting	1
	143*	143*	143*	3/8" Male x 1/4" Female 90° Swivel Fitting	1*
	P050H	P050H	P050H	Hydraulic Hose	5'
	PM3196P*	PM3196P*	PM3196P*	12V Monarch Pump	1



CP271MTE



PUMP BRACKET



HARDWARE



BREAKER



TWIST LOCK



FITTINGS



SAFETY PROP



PUMP

*Power Up Power Down Kits come with a CP077K Remote, a PM-3551 Pump, 2 - 14490 Fittings and a 7' Hose