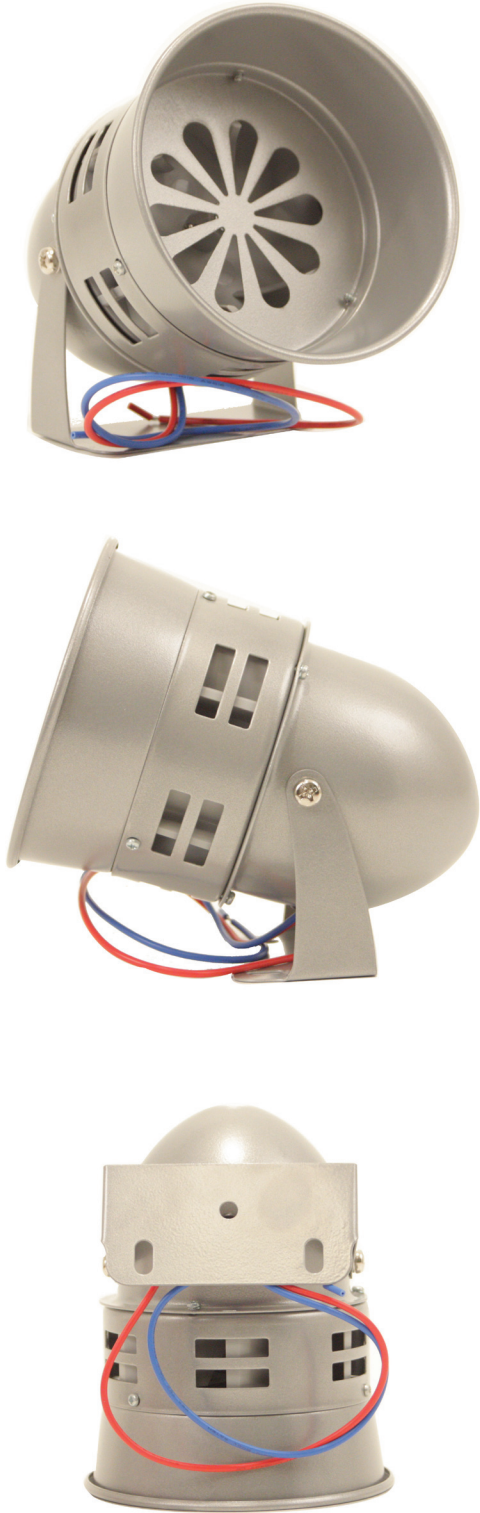


# PIERCE

PULLING FOR YOU

## STANDARD DUTY CATTLE SIREN



<b>CATEGORY</b>	RANCH
-----------------	-------

<b>PART NO.</b>	PCH324
-----------------	--------

<b>PRODUCT DESCRIPTION</b>
12V Standard Duty Cattle Siren

<b>SPECIFICATIONS</b>	
<b>DIMENSIONS</b>	6.13" x 5" x 5"
<b>BOX DIMENSIONS</b>	5.63" x 5.63" x 7.15"
<b>VOLTAGE</b>	12V
<b>RUN TIME</b>	2 Min.
<b>SENSITIVITY</b>	105 Db
<b>WARRANTY</b>	1 Year