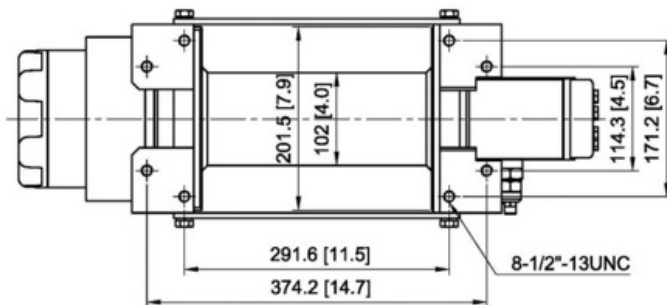
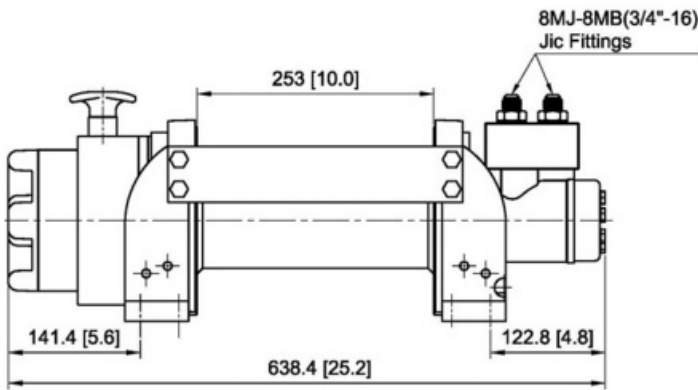
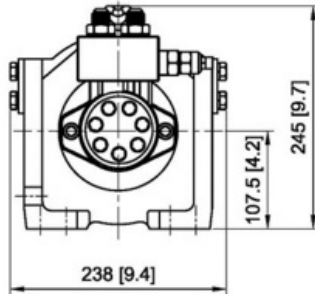


# PSHV12000 WINCH

# PIERCE PULLING FOR YOU



CATEGORY WINCH

PART NO. PSHV12000

## PRODUCT DESCRIPTION

12,000 lb Hydraulic Industrial Winch

## SPECIFICATIONS

RATED LINE PULL	12,000 lb
LINE SPEED	36 fpm @ 15.9 gpm
OPERATION PRESSURE	2,175 psi / 150 bar
MAX OIL FLOW	15.9 gpm
HYDRAULIC MOTOR	7.6 in <sup>3</sup> / rev
GEAR RATIO	2-stage planetary gear 16:1
WINCH CONSTRUCTION	Aluminum die cast housings with steel drum
CLUTCH	Rotating ring gear
BRAKE	Spring applied drag brake together with over-center valve supplied
ROTATION OF WINCH	Underwound
DRUM BARREL DIAMETER	4"
DRUM FLANGE DIAMETER	7.9"
DISTANCE BETWEEN FLANGES	10"
MOUNTING BOLTS PATTERN	11.5" x 6.7" 14.7" x 4.5"
WIRE ROPE RECOMMENDED	1/2" x 82'
WINCH WEIGHT	81.4 lbs
GROSS WEIGHT	102.5 lbs
WINCH DIMENSIONS (LxWxH)	25.2" x 9.4" x 9.7"
BOX DIMENSIONS (LxWxH)	26.5" x 14.6" x 11.2"

## LINE SPEEDS

LAYERS OF WIRE ROPE	PULL (LB)	WIRE ROPE (FT)	SPEED (@15.9GPM)
1	12,000 lb	23. ft	36.0 fpm
2	10,075 lb	50.9 ft	43.3 fpm
3	8,684 lb	82.0 ft	51.2 fpm